



**ERINA  
HIGH  
SCHOOL**

**A caring  
community  
committed to  
excellence**

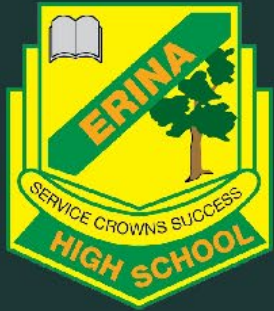
---

**Welcome to all families and  
congratulations for your child  
being selected on merit for the  
EHS A Stream Class for this year.**





Parents in the room please share with an elbow buddy, what your **favourite subject** was at school, **why** is was your favourite and what **successful characteristics** you displayed as a student back in the day?



# ERINA HIGH SCHOOL

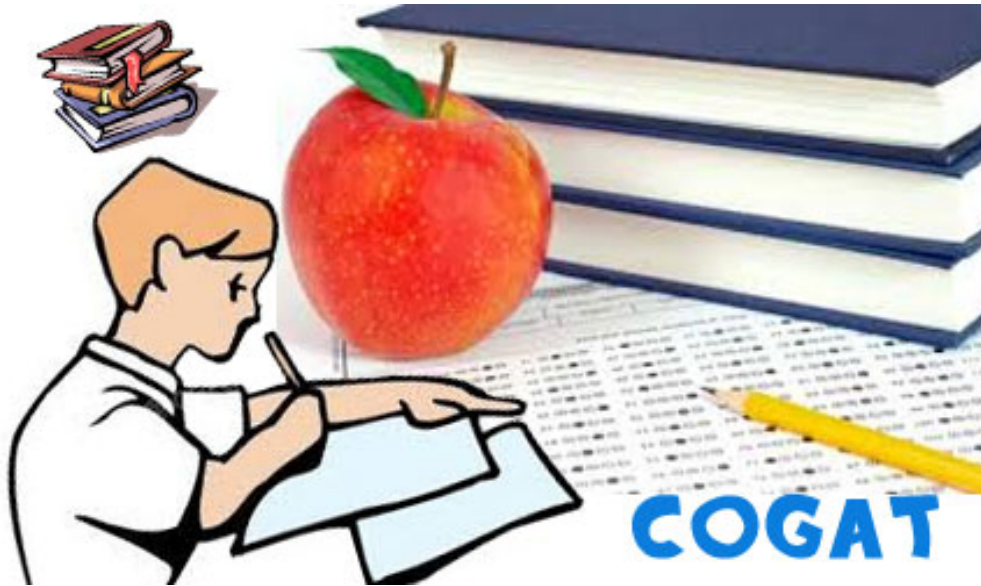
A **Stream** caters specifically for **high achieving** students who achieve a **high level of performance** across Core and Key Learning Areas. They demonstrate a strong **will to develop intelligent behaviours** to continue to **grow their potential** and achievement level.

---

## A Stream Performance Expectations

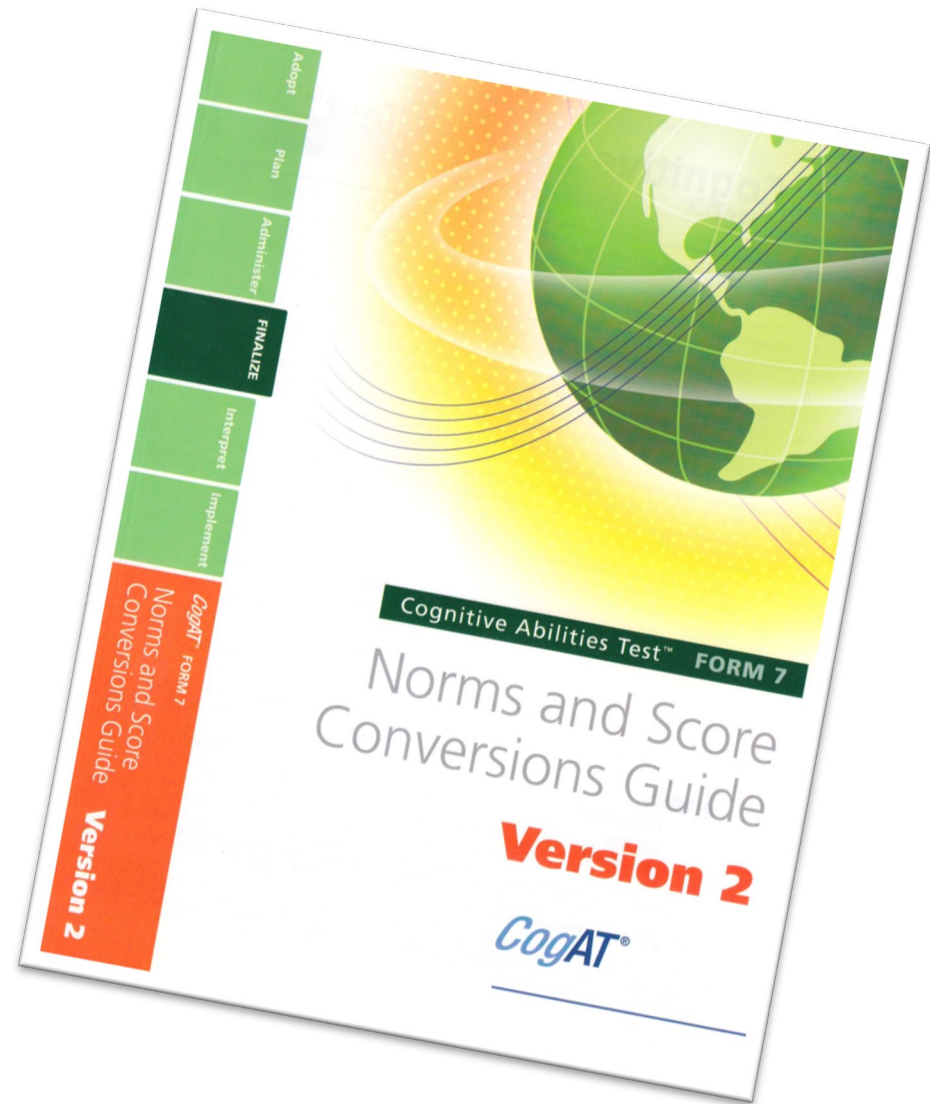
Students who are successful in applying for Erina High School's (EHS) A Stream class, through application, **have clear academic expectations and performance standards to achieve**. All students are **open to developing and demonstrating intelligent behaviours** and a **growth mindset**. A Stream students continue to develop qualities and characteristics of a **successful student**.





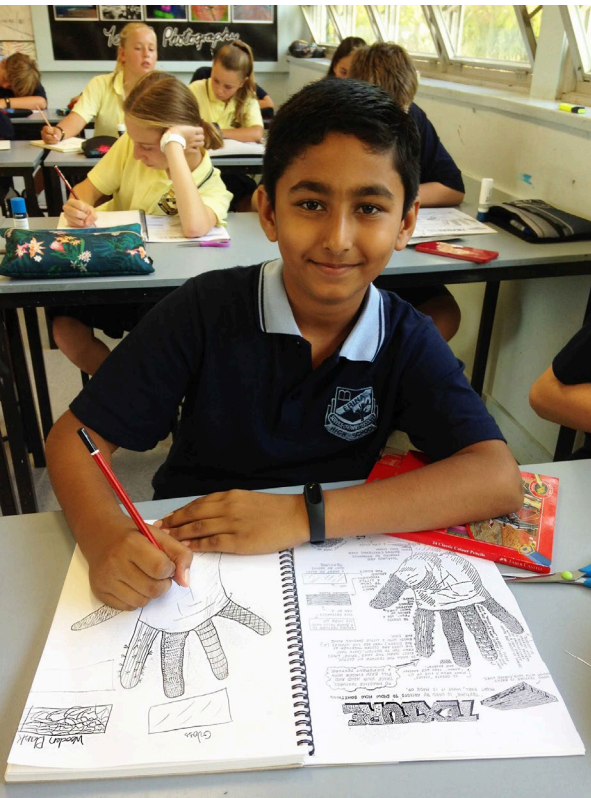
Abilities	Age Scores			APR Graph				
	Standard Age Score	Age Stanine	Age Percentile Rank	1	25	50	75	99
Verbal	102	5	55					
Quantitative	115	7	83					
Nonverbal	107	6	67					
Composite (VQN)	108	6	69					

Abilities	Raw Scores			Grade Scores		Local Scores	
	Number of Items	Number Att.	Number Correct	Grade Stanine	Grade Percentile Rank		
Verbal	62	62	34	5	52		
Quantitative	52	52	34	7	79		
Nonverbal	56	56	34	6	65		
Composite (VQN)				6	67		



# A Stream students academic performance is reviewed Semester 1 and 2

---



# ICAS

International Competitions  
and Assessments for Schools



<https://youtu.be/Yi6n1sHikvQ>

**ERINA**  
HIGH  
SCHOOL



# Aspiration Day



TH  
N

AUST

“Getting organised is easy.  
Staying organised requires discipline”

---

# Organisation for Learning





# Interactive Workbook

Student Output

Teacher &  
Student Input

Blank lined paper template with a vertical red margin line on the left side.



Blank lined paper template with a vertical red margin line on the left side. The page contains pre-filled text in blue italics.

*Topic: A Stream Learning*

*Date: 6/02/2020*

*Learning Intention (LI): To understand what it means to be an A Stream student and what we all can do to support high achieving students?*

*Annotations*

*Notes:*

*A Stream caters specifically for high achieving students who achieve a high level of performance across Core and Key Learning Areas. They demonstrate a strong will to develop intelligent behaviours to continue to grow their potential and achievement level.*

*A Stream Performance Expectations*

*Students who are successful in applying for Erina High School's (EHS) A Stream class, through application, have clear academic expectations and performance standards to achieve. All students are open to developing and demonstrating intelligent behaviours and a growth mindset. A Stream students continue to develop qualities and characteristics of a successful student.*

*Summary:*

Blank lined paper template with a vertical red margin line on the left side.



Topic: *A Stream Learning* Date: *6/02/2020*

*Learning Intention (LI): To understand what it means to be an A Stream student and what we all can do to support high achieving students?*

---

<i>Annotations</i>	<i>Notes:</i>
	<i>A Stream caters specifically for high achieving students who achieve a high level of performance across Core and Key Learning Areas. They demonstrate a strong will to develop intelligent behaviours to continue to grow their potential and achievement level.</i>
	<i><u>A Stream Performance Expectations</u> Students who are successful in applying for Erina High School's (EHS) A Stream class, through application, <u>have clear academic expectations and performance standards to achieve.</u> All students are open to developing and demonstrating intelligent behaviours and a growth mindset. A Stream students continue to develop qualities and characteristics of a successful student.</i>
	<i><u>Quickwrite:</u> What qualities and characteristics does my child possess that indicates they are a successful student?</i> <ul style="list-style-type: none"><li>•</li><li>•</li><li>•</li><li>•</li><li>•</li></ul>
	<i>Summary:</i>



# CRITICAL READING

## Strategies

#1 Number the paragraphs  
...so you can cite text evidence

Underline or highlight  
key information

Use the dictionary!

Box & define words you  
don't know

Circle key terms

...especially words/phrases that are repeated

? | Use symbols to  
show your thinking | ★  
...create a key to remind yourself of their meaning

This is just  
the start, one  
thing I  
learned

Write connections to  
other ideas/info you've  
learned in the margins

# Activity

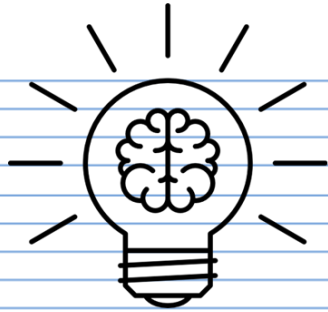
---

# Homework

# Home Practice

# Home Study

# Revision



Is a Growth Mindset about growing my brain???



Topic: A Stream Learning

Date: 6/02/2020

Learning Intention (LI): To understand what it means to be an A Stream student and what we all can do to support high achieving students?

Annotations

Notes:

\* A Stream caters specifically for high achieving students who achieve a high level of performance across Core and Key Learning Areas. They demonstrate a strong will to develop intelligent behaviours to continue to grow their potential and achievement level.

A Stream Performance Expectations

Students who are successful in applying for Erina High School's (EHS) A Stream class, through application, have clear academic expectations and performance standards to achieve. All students are open to developing and demonstrating intelligent behaviours and a growth mindset. A Stream students continue to develop qualities and characteristics of a successful student.

Quickwrite:

What qualities and characteristics does my child possess that indicates they are a successful student?

- 
- 
- 
- 
- 

Summary:

I am a high achieving student who is capable of a high level of achievement.

I need to develop and practice intelligent behaviours. What are other intelligent behaviours I need to be aware of?

A Stream students must maintain a high level of academic performance.

# Organisation for Learning

---



# Whole School Literacy Strategies

Extended Response Paragraph Writing using

## T X X X C

**T** TOPIC SENTENCE- State the main idea you will focus on

**X** EXPLAIN- Explain this main idea

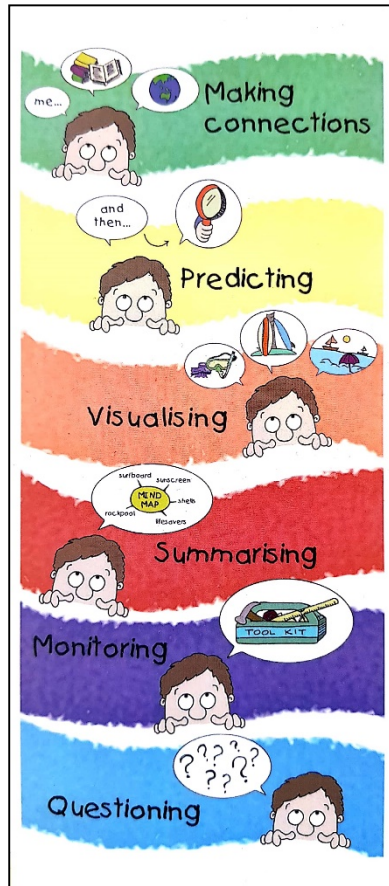
**X** EXAMPLE- Give evidence, quotes, data or description

**X** EXPAND- Build on the above with a second example

**C** CONNECT/CONCLUDE- Link back to the main idea

Writing a paragraph in TXXXC format will help you to answer extended response questions with better structure and more depth.

\*\*\*Note- The three middle parts (XXX) are interchangeable.



## Here, Hidden, Heart & Head

### Here

What information can you find that's right there in the text? (You can point to it).



### Hidden

Hunt through the text looking for clues to give you information that may be 'hidden'.



### Heart

What feelings can be found in the text? Who's feeling them and how come?



### Head

Take the information in the text, add it to what you already know and come up with new information!



# CALL TO ACTION

---

Parents live busy lives and can be very time poor.

## Top Tips:

- ✓ Get your child to show you their workbook
- ✓ Look for markings, highlights, notes are evident and complete.
- ✓ Look to see they have completed their summaries.

**ERINA**  
HIGH  
SCHOOL





# Questions

---



**ERINA**  
HIGH  
SCHOOL



# Thank you

---

## Contact

Deputy Principal Mr D. Brailey

P 02 4367 7353


F 02 4365 3086


E [erina-h.school@det.nsw.edu.au](mailto:erina-h.school@det.nsw.edu.au)

152 The Entrance Road Erina 2250

[www.erina-h.schools.nsw.edu.au](http://www.erina-h.schools.nsw.edu.au)

## Follow our school

 [facebook.com/ErinaHighSchool](https://facebook.com/ErinaHighSchool)

 [@ErinaHighSchool](https://www.instagram.com/ErinaHighSchool)



# EHS

ERINA HIGH SCHOOL

SERVICE CROWNS SUCCESS